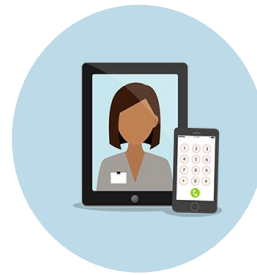




Find a Doctor



Telemedicine



Benefits



Mobile App

Making the Most of Your Health Plan

Brought to you by Excellus BlueCross BlueShield

Attend this live webinar to learn all about the tools and resources you have as an Excellus BlueCross BlueShield member including telemedicine, wellbeing deals and discounts, preventive screenings and more!



Care Management with Wellframe®



Health and Wellness

When: June 6th Noon
July 12th 9:00 am
August 8th Noon

Each class provides the same information.

Email: hcwellness@tompkins-co.org to be sent the class link



Estimate Medical Costs